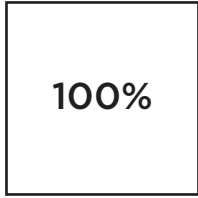


LIFE AID
MASK TEMPLATE

Two-panel with pocket
Simple Design



1/4" fold line

Cut out two filter pockets on solid line
1/4" seam allowance

**ADULT
FILTER POCKET**

CENTER SEAM

CENTER SEAM

**ADULT
OUTER FACE MASK**

Cut out two outer masks on solid line
1/4" seam allowance

Main Fabric (cotton)
13" x 7", prewash before cutting
Lining Fabric (cotton or flannel)
12" x 7", prewash before cutting

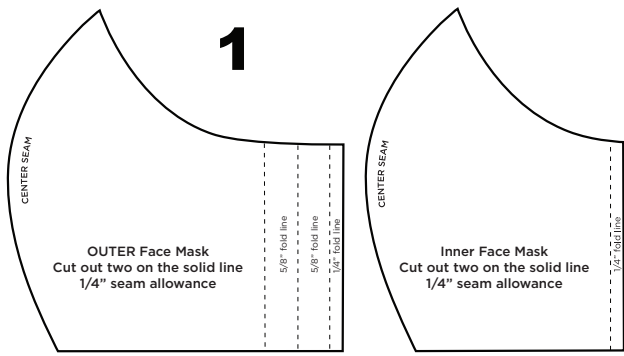
5/8"

5/8"

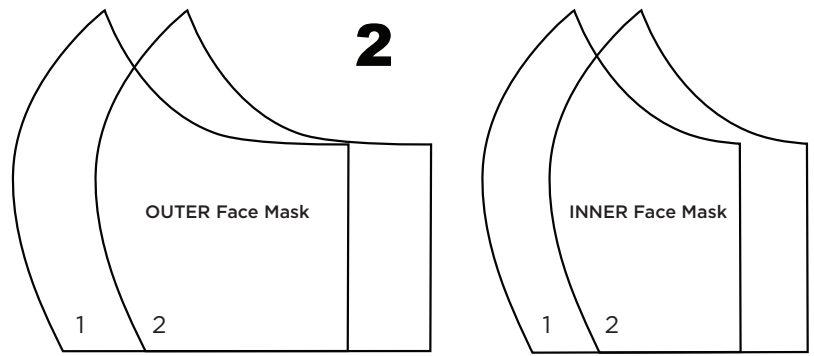
5/8" fold line

5/8" fold line

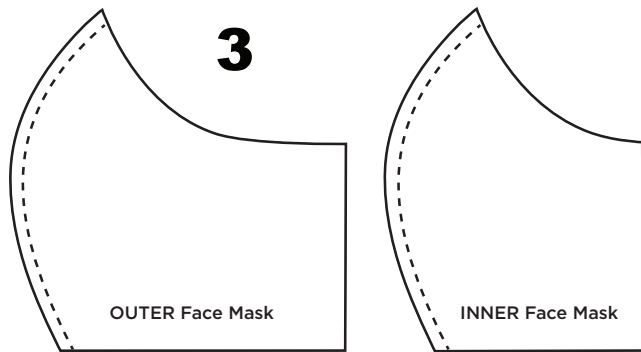
1/4" fold line



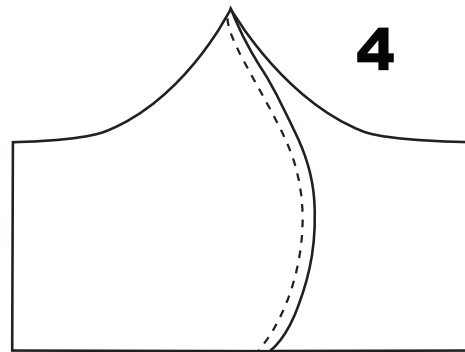
Cut two OUTER and two INNER face masks



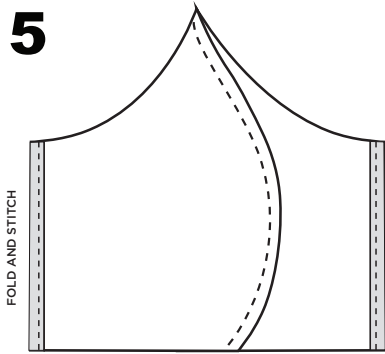
Cut two sets per pattern, making four pieces



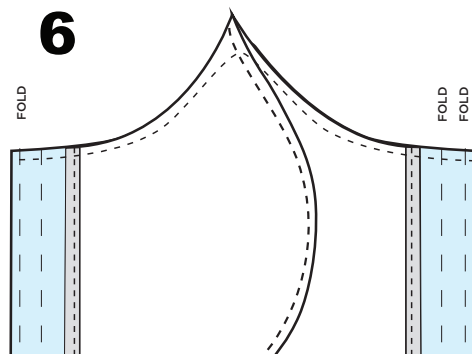
Sew right sides together, 1/4" seam along the inside center face mask pieces. Repeat for the outside center face mask seam.



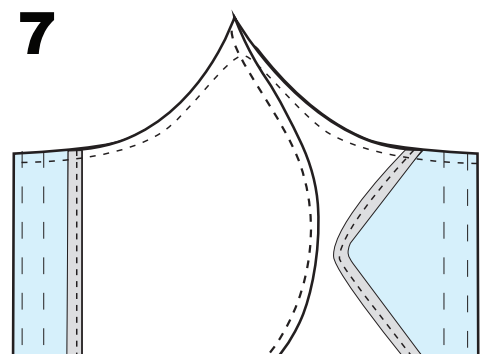
OUTER Face Mask (open)



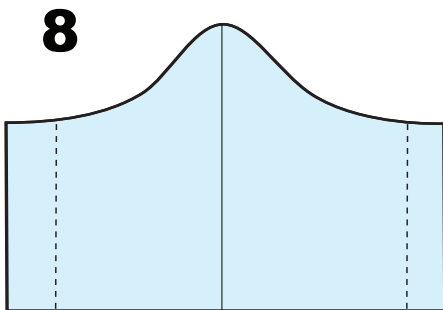
Fold 1/4" edge along short-side edges of the INNER face mask. Stitch in place.



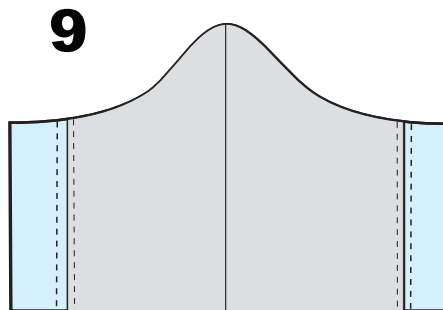
Match up sides (face print together) Sew top and bottom edge Back stitch at the beginning and end.



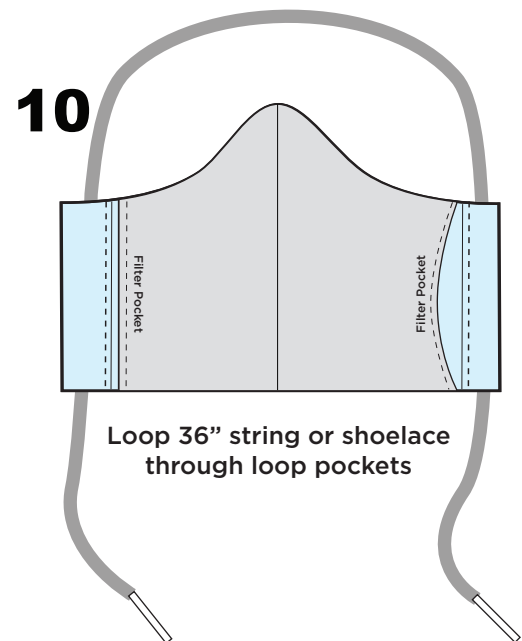
Turn inside out



Front (OUTER forward)



Match up sides (face print together) Sew top and bottom edge Back stitch at the beginning and end.



Loop 36" string or shoelace through loop pockets